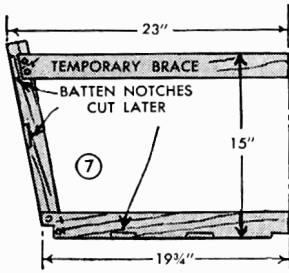
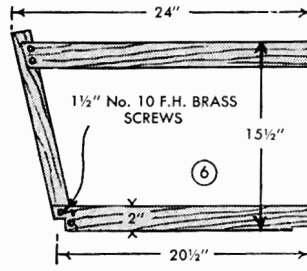
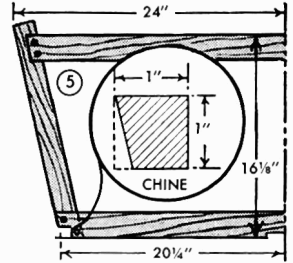
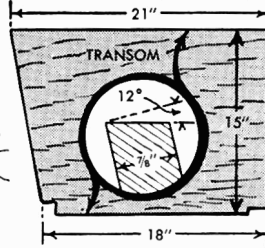
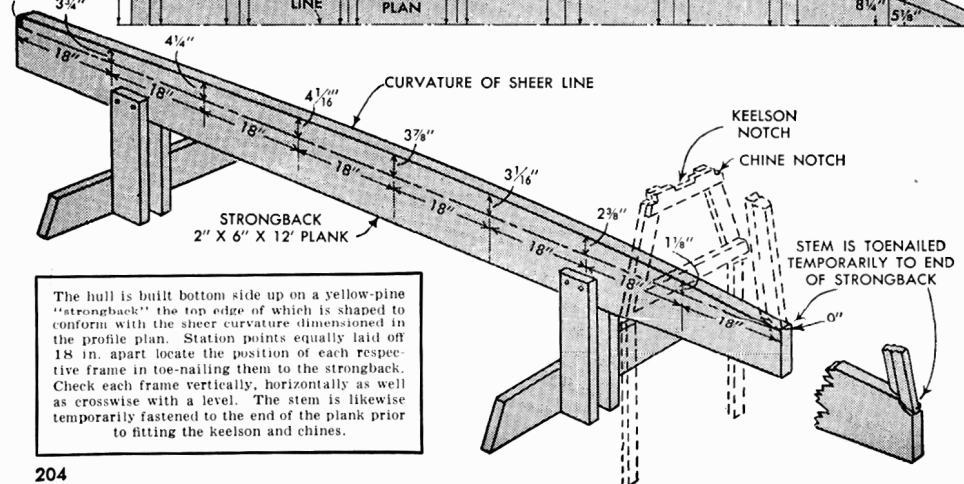
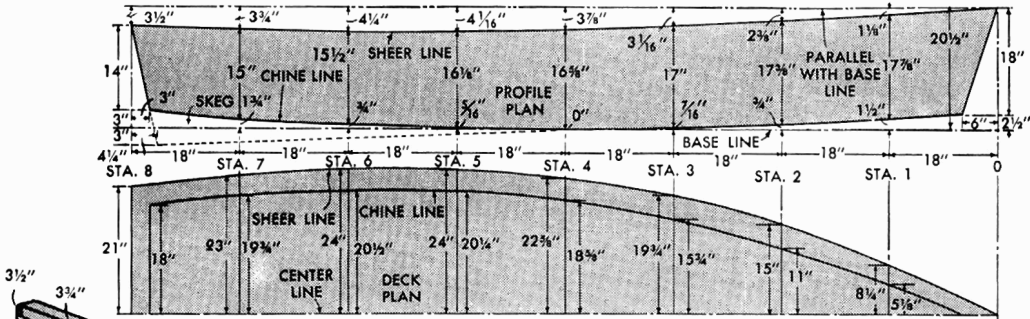




Here's A POPULAR

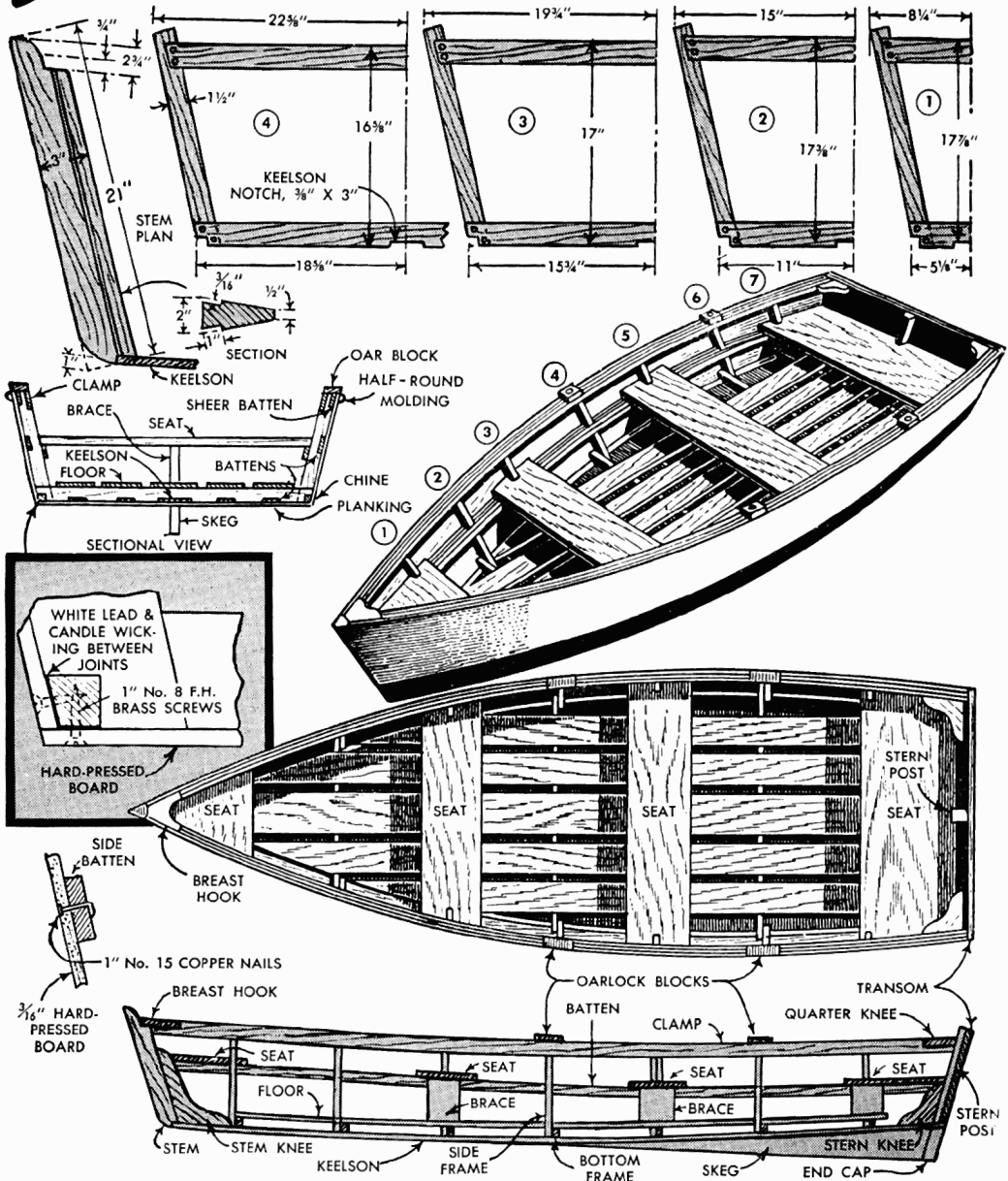


- MATERIAL LIST**
- Stem, 1 pc. 2" x 3" x 21"—oak
 - Stem knee, 1 pc. 7/8" x 9" x 14"—oak
 - Keelson, 1 pc. 3/8" x 3" x 12 ft.—oak
 - Transom, 1 pc. 7/8" x 15" x 4 1/2"—cypress
 - Sternpost, 1 pc. 7/8" x 7/8" x 15"—oak
 - Stern knee, 1 pc. 7/8" x 6" x 6"—oak
 - Frames, 19 running ft. oak for bottom frames, 2" x 3/4", 21 running ft. oak for side frames, 3/4" x 1 1/2"
 - Battens, 10 pcs. 3/8" x 1 1/4" x 12 ft.—spruce
 - Clamps, 2 pcs. 1 1/2" x 2" x 13 ft.—spruce
 - Chines, 2 pcs. 1" x 1" x 12 ft.—oak
 - Planking, 1 pc. 4 ft. x 12 ft. bottom, 2 pcs. 18" x 12 ft. sides—3/16" hard-pressed wood
 - Skeg, 1 pc. 7/8" x 5" x 6 ft. oak, this also supplies end cap for skeg, oarlock blocks, and seat braces
 - Seats, 1 pc. 7/8" x 10" x 13 ft.—cypress
 - Quarter knees, 2 pcs. 3/4" x 5" x 5"—oak
 - Breast hook, 1 pc. 3/4" x 4" x 7"—cypress
 - Flooring, 3/2" x 6" x 50 ft.—spruce or cedar
 - Molding, 2 pcs. 3/4" half round, 12 ft. long—oak



The hull is built bottom side up on a yellow-pine "strongback" the top edge of which is shaped to conform with the sheer curvature dimensioned in the profile plan. Station points equally laid off 18 in. apart locate the position of each respective frame in toe-nailing them to the strongback. Check each frame vertically, horizontally as well as crosswise with a level. The stem is likewise temporarily fastened to the end of the plank prior to fitting the keelson and chines.

Twelve-Foot ROW BOAT



PROCEDURE

1. Construct "strongback" from 12-ft. plank as shown.
2. Cut the seven frames to size and assemble with F.H. brass screws.
3. Center the frames and toe-nail them upright to the "strongback."
4. Cut the stem to shape from 2-in. oak and fasten to notched end of "strongback."
5. Fasten keelson and chines in place with 1 1/2 in. No. 10 F.H. brass screws and plane chines down flush with side frames.
6. Cut batten notches 3/8" deep in transom and side and bottom frames and fasten battens with 1 1/4" No. 6 F.H. brass screws.
7. Shape and fit the breast hook and the stem and the stern knees next.
8. Lay cladding in white lead along the chines and transom, and cover the sides of hull first with single panels of 3/16 in. hard-pressed board, fastening to frames, stem, chines and transom with 1-in. brass screws spaced 1 in. apart. Cover bottom in same manner.
9. Fit clamp boards and quarter knees at stern and then add floor boards, seat risers and seats. Cover stem with 1-in. iron nosing.